



**COLOUR BLOCK** Stephen Ormandy's work is reminiscent of art icon John Coburn's, though his use of colour and form (left) has become as identifiable as a signature. Stephen, who co-founded Dinosaur Designs with Louise Olsen and Liane Rossler while the trio were still art students, will follow up his 2010 sell-out exhibition with another show at Sydney's Tim Olsen Gallery from November 7 – 25. [timolsengallery.com](http://timolsengallery.com)

### MULTIMEDIA EXPERTS

AES+F IS A GROUP OF FOUR RUSSIAN ARTISTS, INCLUDING PHOTOGRAPHER VLADIMIR FRODKES. THEIR PRACTICE SPANS PHOTOGRAPHY, VIDEO, DIGITAL APPLICATIONS AND SCULPTURE INSTALLATIONS, WHICH HAVE FEATURED IN MANY ART BIENNALES. SEVEN NEW SCULPTURES (RIGHT) FROM THE ANGELS/DEMONS SERIES WILL FORM PART OF AN EXHIBITION AT ANNA SCHWARTZ GALLERY IN SYDNEY, FEBRUARY 20 – MARCH 30. [ANNASCHWARTZGALLERY.COM](http://ANNASCHWARTZGALLERY.COM)

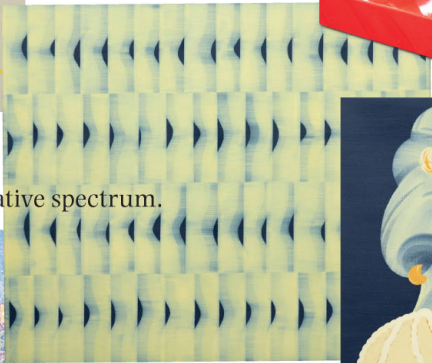


## Magnum opus

Imagination runs wild across the creative spectrum.



**IMPRESSIVE** National Gallery Victoria is hosting the first comprehensive Australian exhibition dedicated to the Neo-Impressionist movement, showcasing 78 works including paintings by Maximilien Luce (above), Théo van Rysselberghe and Georges Seurat. Entitled 'Radiance: The Neo-Impressionists', the exhibition showcases the fundamental principles of this significant art style, according to senior curator Dr Ted Gott, through the luminous landscapes, glittering Parisian cityscapes and stunning portraits. November 16 – March 17. [ng.vic.gov.au](http://ng.vic.gov.au)



**HIGH PRAISE** This year's winner of the Brett Whiteley Travelling Art Scholarship is **Mitch Cairns**. Judge Del Kathryn Barton said: "The sensitivity of surface, composition and paint within these works reflects a disciplined and conceptually passionate practice." Mitch's *One Half of a Woman's Waistline Repeated* and *Poor Mum* (above) are on display at Brett Whiteley Studio until November 25. [artgallery.nsw.gov.au](http://artgallery.nsw.gov.au)



### ANIMAL ANTICS

**Troy Emery** produces colourful animal sculptures, such as *Wild Thing* (left), with taxidermy foam bodies, polyester pompoms, and tasselled fringing that can be seen at Gould Galleries, Melbourne. His first solo show with Martin Browne Contemporary in Sydney will be held in early 2013. [martinbrownefineart.com](http://martinbrownefineart.com)

**FIESTA TIME** Follow the multimedia photo stream of the highlights of the Sydney Festival, January 5 – 27, 2013, or live on Twitter @sydney\_festival.